



HYDRAULIC NUT SPLITTER

AUTO-SPLITTER™ - The Clean Cut Solution to Removing Frozen Nuts.

With AUTO-SPLITTER™ you can easily remove heavily corroded, seized nuts quickly, quietly and safely!

FAST! To remove a 3-1/2inch nut with a torch or hammer and chisel might take up to 20 minutes. But you only need 20-30 seconds with Auto-Splitter. Fast set-up too! AUTO-SPLITTER goes from the toolbox to in-use in less than five minutes.

SAFE! No hammers. No impact. Operator has hands off during operation. No flames. No risk to volatile environments. AUTO-SPLITTER cuts smoothly so that there is no danger to the operator or the surrounding equipment.

QUIET! All you'll hear is the hum of the hydraulic pump and a reassuring "snap" when the nut is cut. With AUTO-SPLITTER, there's no noise pollution or risk of noise-related injury.

PRECISE! You can easily calibrate the cutting chisel so only the nut is cut, with no damage to the bolt or stud threads.

VERSATILE! AUTO-SPLITTER cuts through even the hardest nuts, including ASTM A194 2H Brinell hardness 248-352. Each model of AUTO-SPLITTER can be used for a wide range of inch or metric nut sizes.

IT SAVES YOU MONEY! Nut removal takes less time, so downtime is reduced. And with AUTO-SPLITTER, you can avoid costly damage to bolts, studs and surrounding equipment.

AUTO-SPLITTER outperforms and outlasts the competition!

* **More Versatile** - One AUTO-SPLITTER does the work of several competitive models because each housing can be used with a wide range of nut sizes. With most other nut-splitters, one housing will only fit two nut sizes, forcing you to purchase a larger number of housings. But each AUTO-SPLITTER housing fits 6-9 different sizes. With AUTO-SPLITTER, you can also use the hydraulic cylinders with more than one housing.

* **More Flexible** - The special housing design of the AUTO-SPLITTER fits into tight spaces, so that you can work from more angles and in more applications than with competitor's models. It fits all API and ANSI flanges and virtually all valve bonnets. AUTO-SPLITTER cuts from 5/8" to 6-1/2" (16 - 165 mm) across the flats hexagonal nuts. It can be used for both inch and metric sizes, and with any shape nut. Round, square, 12-point and other special nuts will require the use of an adapter. Also available, are adapters for splitting hulk bolts.

* **More Durable** - AUTO-SPLITTERS are made to last. Our special metallurgy, hardening process and sharpening methods make our chisels good for dozens of cuts before resharpening. And many resharpenings before replacing.

FASTORQ OFFERS THE LARGEST LINE OF NUT SPLITTERS IN THE WORLD!

Choose from three styles: Standard, Angle Head & Angle Head Double Cut (custom sizes available)

Standard Models

Model	Stud Diameter in (mm)	Nut ATF in (mm)	A in (mm)	B in (mm)	C in (mm)	D in (mm)	E in (mm)	F in (mm)	Weight lb (kg)
AS 105	7/16" – 7/8" (11 – 22)	5/8" – 1 7/16" (16 – 36)	1.5" (38.1)	11" (279.4)	3.969" (101.6)	0.421" (9.5)	2.592" (65.75)	3.609" (91.43)	20 (9)
AS 200	7/8" – 1 1/4" (22 – 32)	1 7/16" – 2" (36 – 51)	1.525" (38.1)	11.75" (298.4)	4" (101.6)	0.625" (12.7)	3.374" (85.7)	4.281" (108.7)	21 (9.5)
AS 204	1 1/4" – 1 1/2" (32 – 38)	1 13/16" – 2 3/8" (46 – 60)	2" (57.1)	16" (406.4)	6" (152.4)	0.595" (14.3)	4" (101.6)	4.875" (123.8)	6 (27.7)
AS 210	1 3/8" – 1 3/4" (35 – 45)	2 1/4" – 2 3/4" (57 – 70)	2.25" (57.1)	16" (406.4)	6" (152.4)	0.672" (17.5)	4.5" (114.3)	5.625" (142.88)	62 (28.2)
AS 308	1 3/4" – 2 1/4" (45 – 57)	2 3/4" – 3 1/2" (70 – 89)	3" (77.8)	17.75" (450.8)	7.125" (184.2)	0.875" (19)	5.75" (146)	6.375" (161.92)	95 (43.2)
AS 314	2" – 2 1/2" (51 – 64)	3 1/8" – 3 7/8" (79 – 98)	3.125" (79.4)	18" (457.2)	7.125" (184.2)	0.875" (22.2)	6.25" (158.75)	6.064" (154)	100 (45.4)
AS 404	2 1/2" – 2 3/4" (64 – 70)	3 3/4" – 4 1/4" (95 – 108)	3.75" (95.3)	22.75" (577.9)	9.875" (250.8)	1.125" (28.6)	7.5" (190.5)	7.21" (183.13)	205 (93.2)
AS 500	3" – 3 1/4" (76 – 83)	4 1/2" – 5" (114 – 127)	4.125" (104.8)	23" (584.2)	9.875" (250.8)	1.125" (28.6)	9" (228.6)	7.235" (183.7)	210 (95.4)
AS 506	3 1/4" – 3 1/2" (83 – 89)	4 7/8" – 5 3/8" (124 – 136)	4.125" (104.8)	23.5" (596.9)	9.875" (250.8)	1.125" (28.6)	9.375" (238.13)	7.539" (191.4)	215 (97.7)
AS 608	3 3/4" – 4 1/4" (95 – 108)	5 3/4" – 6 1/2" (146 – 165)	5" (127)	24" (610)	12.5" (317.5)	1.406" (28.6)	11.72" (297.6)	9.424" (239.37)	387 (175.5)

Angle Head Models

Model	Stud Diameter in (mm)	Nut ATF in (mm)	A in (mm)	B in (mm)	C in (mm)	D in (mm)	E in (mm)	F in (mm)	G in (mm)	Wgt lb (kg)
AS 100	7/16" – 5/8" (11 – 16)	1/2" – 1" (13 – 24)	0.687" (17.5)	7.45" (189.2)	2.75" (69.85)	0.25" (6)	2.592" (65.84)	3.609" (91.67)	5.132" (130.32)	7 (3.2)
AS 105AH	7/16" – 7/8" (11 – 22)	5/8" – 1 7/16" (16 – 36)	1.5" (38.1)	10.87" (276.1)	4" (101.6)	0.375" (9.5)	2.75" (69.85)	3.415" (86.74)	7.438" (188.9)	20 (9)
AS 200AH	7/8" – 1 1/4" (22 – 32)	1 7/16" – 2" (36 – 51)	1.5" (38.1)	11.44" (290.5)	4" (101.6)	0.5" (12.7)	3.624" (92)	4" (101.6)	8" (203.2)	21 (9.5)
AS 204AH	1 1/4" – 1 1/2" (32 – 38)	1 13/16" – 2 3/8" (46 – 60)	2.25" (57.1)	16.13" (409.7)	6" (152.4)	0.562" (14.3)	4.25" (107.95)	5.825" (147.95)	11.49" (291.85)	61 (27.7)
AS 210AH	1 3/8" – 1 3/4" (35 – 45)	2 1/4" – 2 3/4" (57 – 70)	2.25" (57.1)	16.51" (419.35)	6" (152.4)	0.687" (17.5)	5" (127)	5.975" (151.76)	11.875" (301.63)	62 (28.2)
AS 308AH	1 3/4" – 2 1/4" (45 – 57)	2 3/4" – 3 1/2" (70 – 89)	3.63" (77.8)	19.64" (498.8)	7.25" (184.2)	.75" (19)	6.25" (158.75)	6.232" (158.3)	13.25" (336.55)	95 (43.2)
AS 314AH	2" – 2 1/2" (51 – 64)	3 1/8" – 3 7/8" (79 – 98)	3.125" (79.4)	20.14" (511.5)	7.25" (184.2)	.875" (22.2)	6.75" (171.45)	7.58" (192.5)	13.75" (349.25)	100 (45.4)

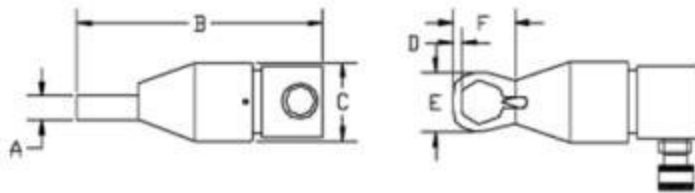
Angle Head Double Cut Models

Model	Stud Diameter in (mm)	Nut ATF in (mm)	A in (mm)	B in (mm)	C in (mm)	D in (mm)	E in (mm)	F in (mm)	G in (mm)	Wgt lb (kg)
AS105AH-DC	7/16" – 5/8" (11 – 16)	5/8" – 1 1/16" (16 – 27)	1.5" (38.1)	10.87" (276.1)	4" (101.6)	0.375" (9.5)	2.75" (69.85)	3.415" (86.74)	7.438" (188.9)	20 (9)
AS200AH-DC	7/8" – 1" (22 – 24)	1 7/16" – 1 5/8" (36 – 41)	1.5" (38.1)	11.44" (290.5)	4" (101.6)	.5" (12.7)	3.624"	4"	8" (203.2)	21 (9.5)

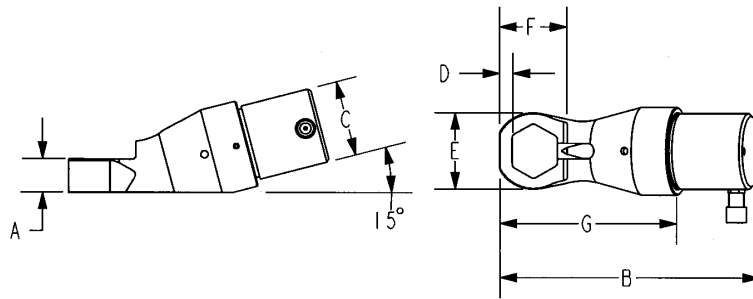
							(92)	(101.6)		
AS204AH-DC	1 1/8" - 1 1/4" (29 - 32)	1 13/16" - 2" (46 - 51)	2.25" (57.1)	16.13" (409.7)	6" (152.4)	.562" (14.3)	4.25" (107.95)	5.825" (147.95)	11.49" (291.85)	61 (27.7)
AS210AH-DC	1 3/8" - 1 1/2" (35 - 38)	2 1/4" - 2 3/8" (57 - 60)	2.25" (57.1)	16.51" (419.35)	6" (152.4)	.687" (17.5)	5" (127)	5.975" (151.76)	11.875" (301.63)	62 (28.2)
AS308AH-DC	1 5/8" - 2" (41 - 51)	2 9/16" - 3 1/8" (65 - 79)	3.63" (77.8)	19.64" (498.8)	7.25" (184.2)	.75" (19)	6.25" (158.75)	6.232" (158.3)	13.25" (336.55)	95 (43.2)
AS314AH-DC	2" - 2 1/4" (51 - 57)	3 1/8" - 3 1/2" (79 - 89)	3.125" (79.4)	20.14" (511.5)	7.25" (184.2)	.875" (22.2)	6.75" (171.45)	7.58" (192.5)	13.75" (349.25)	100 (45.4)

Each AUTO-SPLITTER Nut Splitter is sold complete with: hydraulic cylinder, housing, chisel, allen keys and a spacer set. Each model comes packaged in a sturdy, protective metal tool box. AS-DUO Sets include: 2 housings, 2 sets of spacers, 2 chisels, 1 set of allen keys and 1 common hydraulic cylinder and a tool box. AS-TRIO Sets include: 3 housings, 3 chisels, 3 sets of spacers, 1 set of allen keys and 1 common hydraulic cylinder and a tool box.

Auto-Splitter® Standard: Models AS105 - AS608



Auto-Splitter® Angle Head: Models AS100 - AS314AH



Auto-Splitter® Angle Head Double Cut: Models AS105AH-DC - AS314AH-DC