

# SOLUTIONS...Bolting Tools

## Chesterton Now Offers Maintenance Professionals A Simple Way To Tighten And Confirm Bolt Load Accuracy

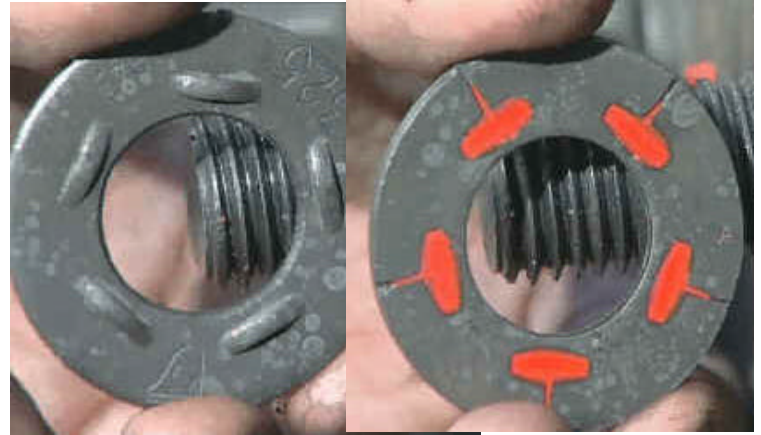
### The Problem:

The creation of proper Seating Stress is a critical factor in all bolted assemblies and flanged gasketed applications. The accepted methods of Torque and Tensioning of bolts are not always possible because of location, lack of calibrated equipment or urgency of the situation. Another critical issue deals with confirming the accuracy of work preformed by others, including outside service companies. When you are told “the job is done”, is it in fact done accurately?

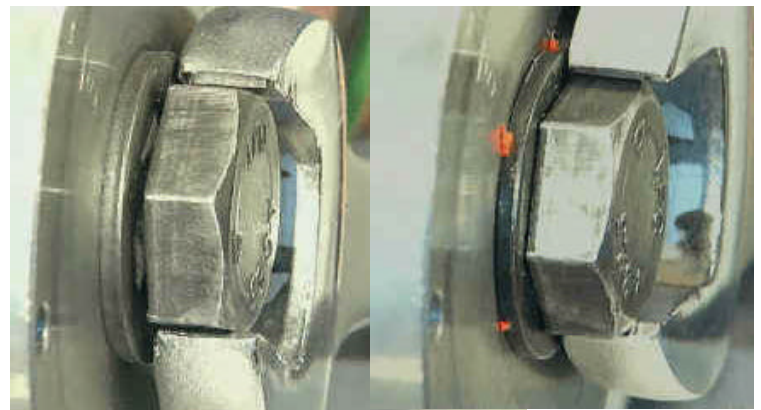
### The Chesterton Solution:

Chesterton has solved the problem of being able to create proper bolt tension and to confirm its accuracy though the use of **Single Use Mechanical Load Cells**. These **DIRECT TENSION SQUIRTER™ WASHERS** provide greater accuracy than conventional touring methods. What provides sealability in flanged and bolted connections is the load produced by creating bolt tension. There is no correlation between torque and tension. Torque is the amount of force required to advance the nut along the threads and tension is the amount of stretch or elongation of the bolt that produces the clamping force in the joint. The accuracy of torque is dramatically affected by bolt condition and lubrication. Used, corroded, dented or poorly lubricated bolts usually require significantly higher “torque” to achieve proper load. The use of varying coefficients of friction between different manufacturers of thread lubricants and un-calibrated torque wrenches become irrelevant because Squirter™ Washers only respond to load.

**DIRECT TENSION SQUIRTER™ WASHERS** have a flexible orange silicone embedded in the depressions under the bumps. To use them, simply tighten the bolts until the orange silicon appears in volume from the squirt locations, then stop tightening. This visual indicator allows you to visually confirm the accuracy of work performed by others.



## Direct Tension Squirterä Washers



Stud Size	Description	Reorder #
0.500"	DTSW Kit (100 Sets)	038500
0.625"	DTSW Kit (100 Sets)	038501
0.750"	DTSW Kit (100 Sets)	038502
0.875"	DTSW Kit (100 Sets)	038503
1.000"	DTSW Kit (100 Sets)	038504

### TECHNICAL DATA

Designed for ASTM A193 Grade B7 bolting or equivalent

Installation Temperature:

Minimum: -60°F (-50°C)

Maximum: 300°F (150°C)

Maximum operating Temperature:

1200°F (650°C)

Grade C1050 Steel (ASTM A325)

Mechanically Galvanized for Corrosion Resistance